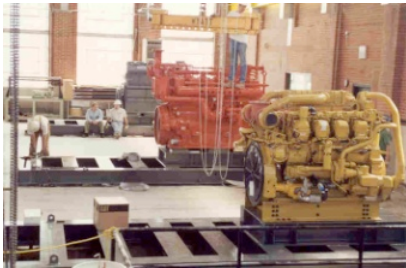




### Exciting New Program!

The **Integrated Graduate Education in Biorefining and Biofuels (IGEB<sub>2</sub>)** program is funded by the NSF to prepare PhD graduates who are trained as interdisciplinary scientists with full understanding of the technical challenges facing the emerging **bioenergy** industry.

### The four focus areas of this program are:



- Crop Sciences and Plant Biotechnology
- Biological, Chemical, and Thermal Biomass conversion
- Product engineering
- Economic and Environmental Assessment



This will be a comprehensive training program that incorporates cross-disciplinary teamwork, courses in multiple disciplines and research projects that span at least two focus areas.

**Fellowship are available NOW! Applications are sought from all current and prospective graduate students in any areas of Science, Mathematics, Engineering and Economics.**

Two-year fellowships include a substantial stipend as well as full coverage of tuition, fees, health benefits and support for travel, supplies and materials.

Please send a letter of interest to the Program Coordinator at:

[biofuels-IGERT@colostate.edu](mailto:biofuels-IGERT@colostate.edu)

